

Your Art Journey  
**Time Travelers**

# JourneyMaker

The activities in this packet are meant to be enjoyed together with friends or family.

Be sure to invite someone to take your art journey with you!

## Are you using JourneyMaker from home?

While some of the activities are written for use in the museum, get creative and look for other objects in your home or immediate surroundings that could help you complete the prompts.

If you have access to a phone, tablet, or computer, you can find high-quality images of artworks on the Art Institute of Chicago's website at [artic.edu/collection](http://artic.edu/collection).

You can also access JourneyMaker online at [artic.edu/journeymaker](http://artic.edu/journeymaker).

Generous support for JourneyMaker has been provided by the Woman's Board of the Art Institute of Chicago.

ART  
INSTITUTE  
CHICAGO

# All Aboard!

Choose a vehicle for your fantastic adventure.



**Bird Shaped Ewer with Crowned Rider  
Holding a Bowl**

1100–1199

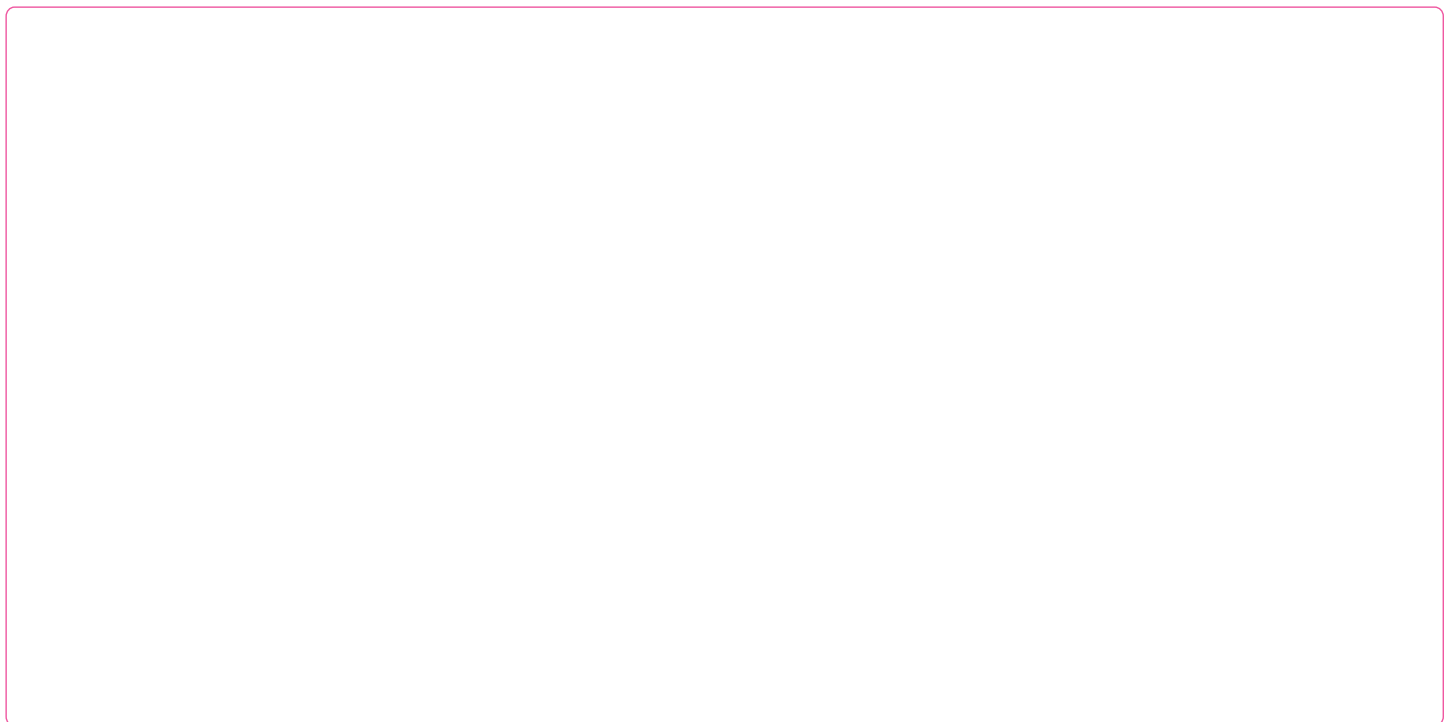
Korea

Bequest of Russell Tyson

How will you travel through time and space?  
Draw a picture of your family onboard the  
vehicle of your imaginations.

**LOOK AGAIN:** The rider wears a fancy crown  
and holds a bowl. Which part of this fantasy fowl  
forms the handle and spout of the pitcher?

Use this space to draw yourself aboard your vehicle:



# Way Out!



Pass through this portal on your way to another dimension.



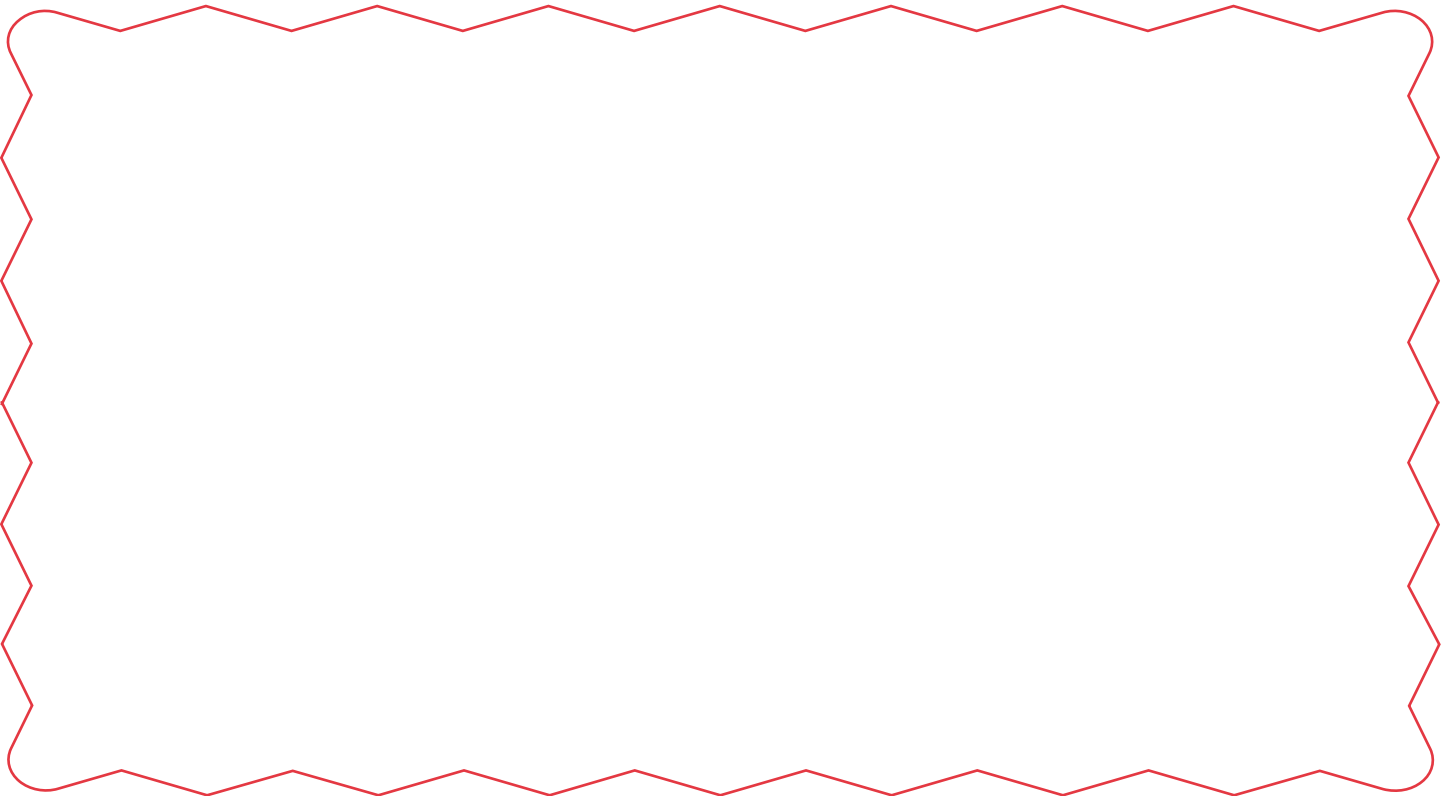
René Magritte  
*Time Transfixed*  
1938

Joseph Winterbotham Collection

Lights, camera, action! Choose one person to be the director and imagine what is on the other side of this portal. Everyone else will pose in response.

**LOOK AGAIN:** A clock and candlesticks, a chimney and smoke, which things belong here and which ones don't? What else adds to the mystery?

Use this space to draw the other side of your portal:



# Fab Gadget

ART  
INSTITUTE  
CHICAGO

A magical object will help you along the way.



**Turban Helmet**  
1465–1510  
Western Iran

George F. Harding Collection

How would you use this gadget on your journey? Write about its magical qualities and draw a picture to show it being used.

**LOOK AGAIN:** The chain mail on this helmet is made of thousands of metal rings joined together. It protects the wearer's face and neck.

Use this space to describe your magical object:

A large, empty, rounded rectangular box with an orange border, intended for writing a description of the magical object.

# Treasure Trove

Snag an awesome souvenir to take home.

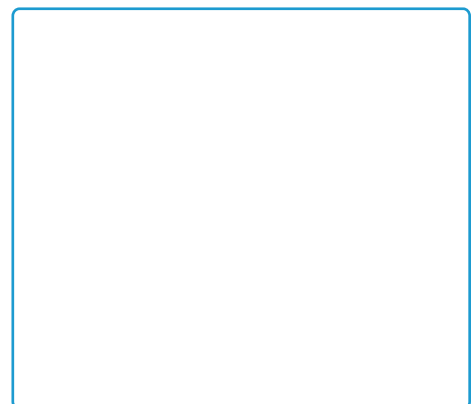
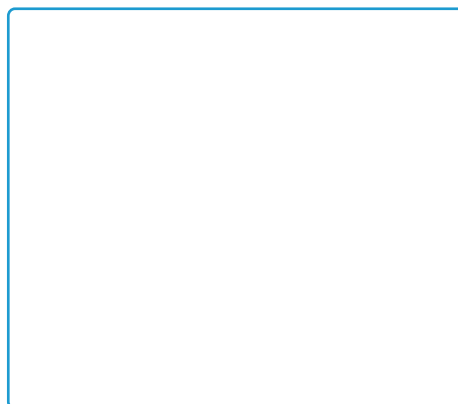
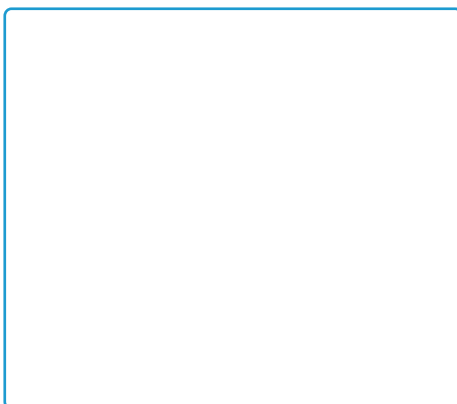
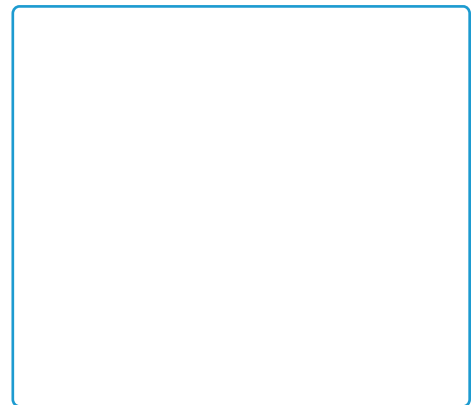
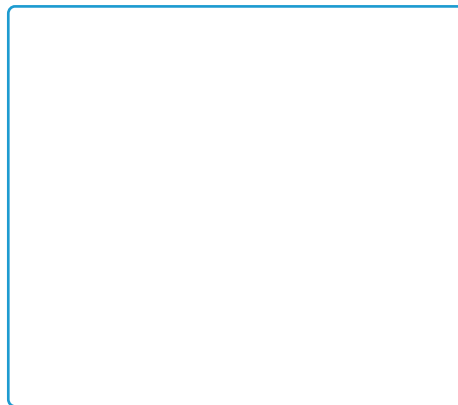
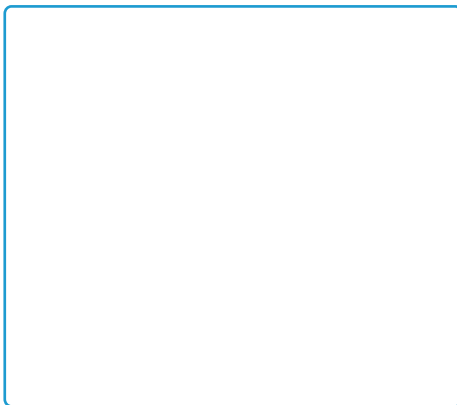


**Paul Stankard**  
*Honey Bee Swarm with Flowers and Fruit*  
**2012**  
Gift of the artist

This souvenir deserves a closer look! Take turns drawing a detail from the object in one of the boxes below. Challenge each other to guess which part is being drawn.

**LOOK AGAIN:** Busy bees buzz around inside a ball of glass. Discover pink blossoms, red fruit, and a honeycomb in the center.

Use this space to draw your details:



# Picture Postcard

Send a snapshot of the special place you visited.



Georges Seurat  
*A Sunday on La Grande Jatte*—1884  
1884–1886

Helen Birch Bartlett Memorial Collection

What a journey! Take turns writing your favorite moments of the adventure. Then, make a drawing of yourself visiting this scene.

**LOOK AGAIN:** This park is alive with activity. Look to see what people and animals are doing. Look closely to see dots and dabs of paint.

Use this space to draw what you would look like in the artwork:

